



# How is Havering Council working to become carbon neutral by 2040?



Havering Council  
Climate Challenge



Havering  
LONDON BOROUGH





# How is Havering Council working to become carbon neutral by 2040?



The London Borough of Havering emits an average of **3.6 tonnes of Carbon Dioxide (CO<sub>2</sub>) per head** into the atmosphere every year – that's the equivalent of:

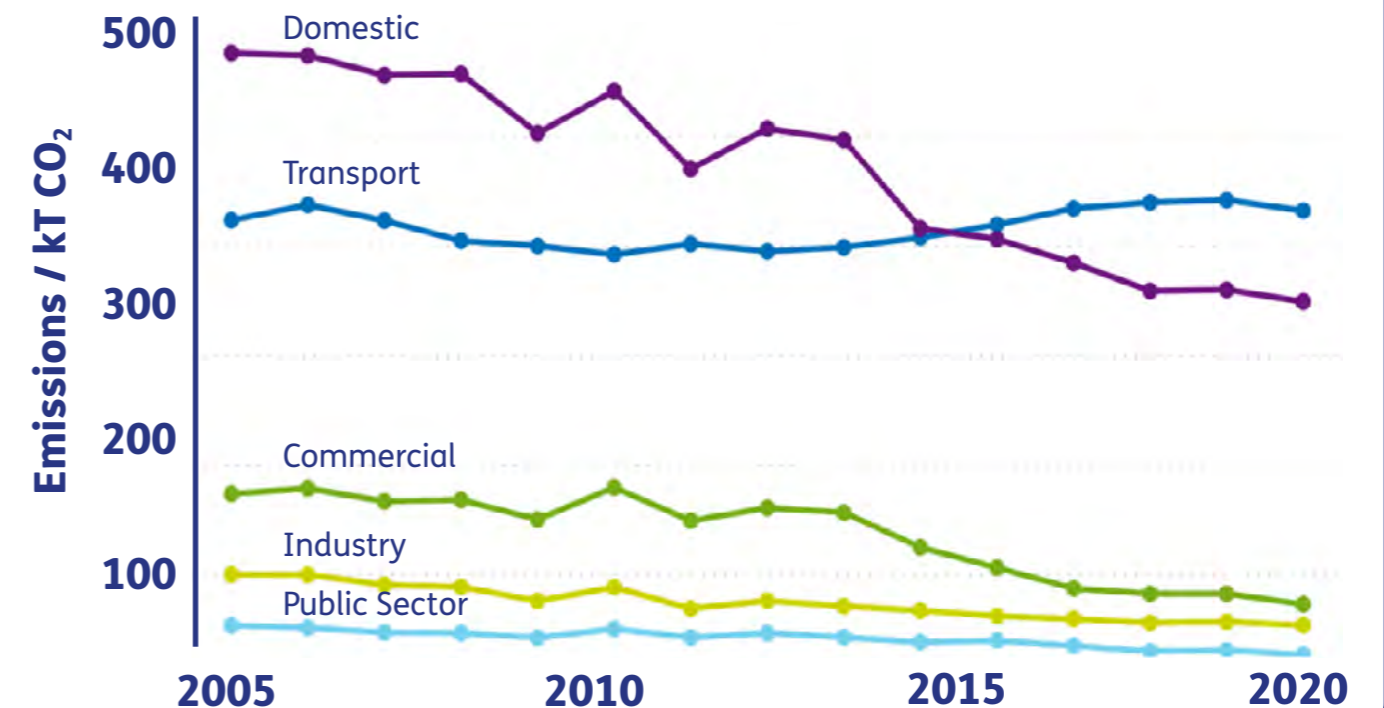
**40** Fuel tanker trucks = **2,000** Standard-sized fire extinguishers = **2,000m<sup>3</sup>** Hot air balloon

To capture 3.6 tonnes of CO<sub>2</sub>



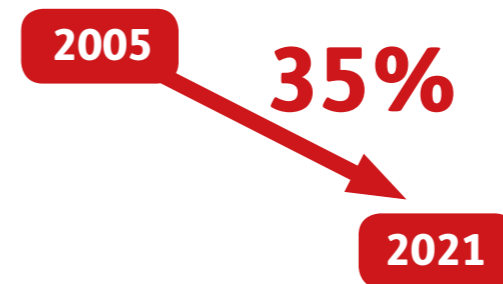
**Transport (46%) and Domestic Gas (37%)** use are the main contributors of CO<sub>2</sub> emissions in Havering

Other contributors are Commercial (8%), Industry (6%) and Public Sector 3%



Net CO<sub>2</sub> emissions have **decreased by an average of 35%** across all main sectors in Havering since 2005

with the biggest CO<sub>2</sub> emission decreases occurring in 2018 and 2019



**80% of UK residents** are either very concerned or fairly concerned about climate change\*



\* According to a 2021 survey by Statista.com





# Here are some of the actions Havering Council are taking to become carbon neutral by 2040



## PEOPLE

- The Council is working with businesses and stakeholders by developing a green apprenticeship scheme and a local Housing Skills Centre
- Attract high-tech environmental investment
- Set up Joint Ventures with colleges on researching green strategies
- Develop a culture change programme for climate issues for Havering Council officers, frontline staff and Councillors



## BUSINESS CONTINUITY

- Ensure effectiveness of the Havering Community Flood Warden Scheme and the Major Emergency Plan (MEP), and introduce improved flood management processes
- Continue to monitor drains to make sure they are not blocked, and advise and install greening measures in streets
- Work closely with community and voluntary sectors to identify problems
- Deliver council programmes on surface water management and drainage and make sure financial and insurance risks are identified



## PUBLIC PROTECTION

- Work with private housing sector and Registered Social Landlords to reduce emissions
- Promote energy efficiency schemes to Private Sector Housing landlords and to vulnerable tenants
- Deliver the Council's Air Quality Action plan
- Work with water authorities and companies to ensure people have access to clean and safe drinking water
- Use Trading Standards to protect vulnerable customers



## STAKEHOLDER AND COMMUNITY

- Work in partnership with community and voluntary groups to raise awareness of climate change and energy issues across different communities
- Create a Green Forum
- Develop a knowledge hub on climate change issues and continue with Healthy Schools programme
- Look at funding to support green initiatives





## WASTE MANAGEMENT

- Review the Council's Reduction and Recycling Plan twice a year to ensure it is on target
- Monitor CO<sub>2</sub> emissions from vehicle-based waste collection operations
- Launch a project to reduce the use of plastic across all council activities



## TRAVEL

- Upgrade council transport fleet with more fuel-efficient and environmentally-friendly alternatives, including replacing the Mayor's vehicle with a fully-electric car in 2021
- Develop a 'Cycling and Walking' strategy for residents, businesses and the community
- Develop an Electrical Vehicle Charging Strategy



## PROCUREMENT

- Research opportunities for reducing reliance on fossil fuels and agree targets for reduction of carbon emissions
- Ensure sustainability issues are incorporated into the procurement of goods, services and works
- Work with local supply chains to reduce carbon emissions



## BUILT ENVIRONMENT

- Work with Academy Trusts and Department for Education to promote low-carbon school buildings
- Promote wildlife corridors as part of the wider landscape strategy
- Support and showcase low-carbon housing developments



## ENERGY MANAGEMENT

- Develop options to buy more energy from renewable sources by moving to green energy suppliers

- Reduce energy use by installing smart meters in facilities managed by Corporate Estates and Community Housing
- Continue to measure and report annual carbon emissions for the borough and for the Council

# A summary of the climate challenge in Havering



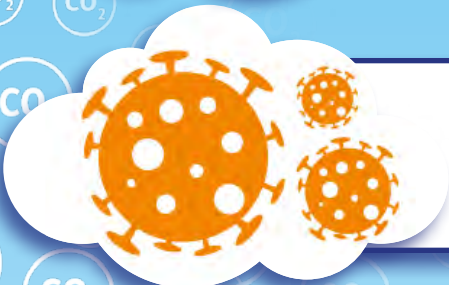
Every person in Havering produces **3.6 tonnes of CO<sub>2</sub>** every year, the equivalent of 40 fuel tanker trucks



Everyone in Havering has a part to play in reducing CO<sub>2</sub> emissions from driving less to reducing heating, gas and electricity usage



CO<sub>2</sub> traps heat, making our environment warmer which causes increased **rain and flooding** in Havering



**COVID-19** has changed the way we work and the way we travel, but can it change the way we think about our role in reducing CO<sub>2</sub> emissions?



Show some Havering spirit in helping the council achieve its goal of becoming **carbon neutral by 2040**

The full Havering Climate Change Action Plan can be viewed [HERE](#)



**Havering**  
LONDON BOROUGH